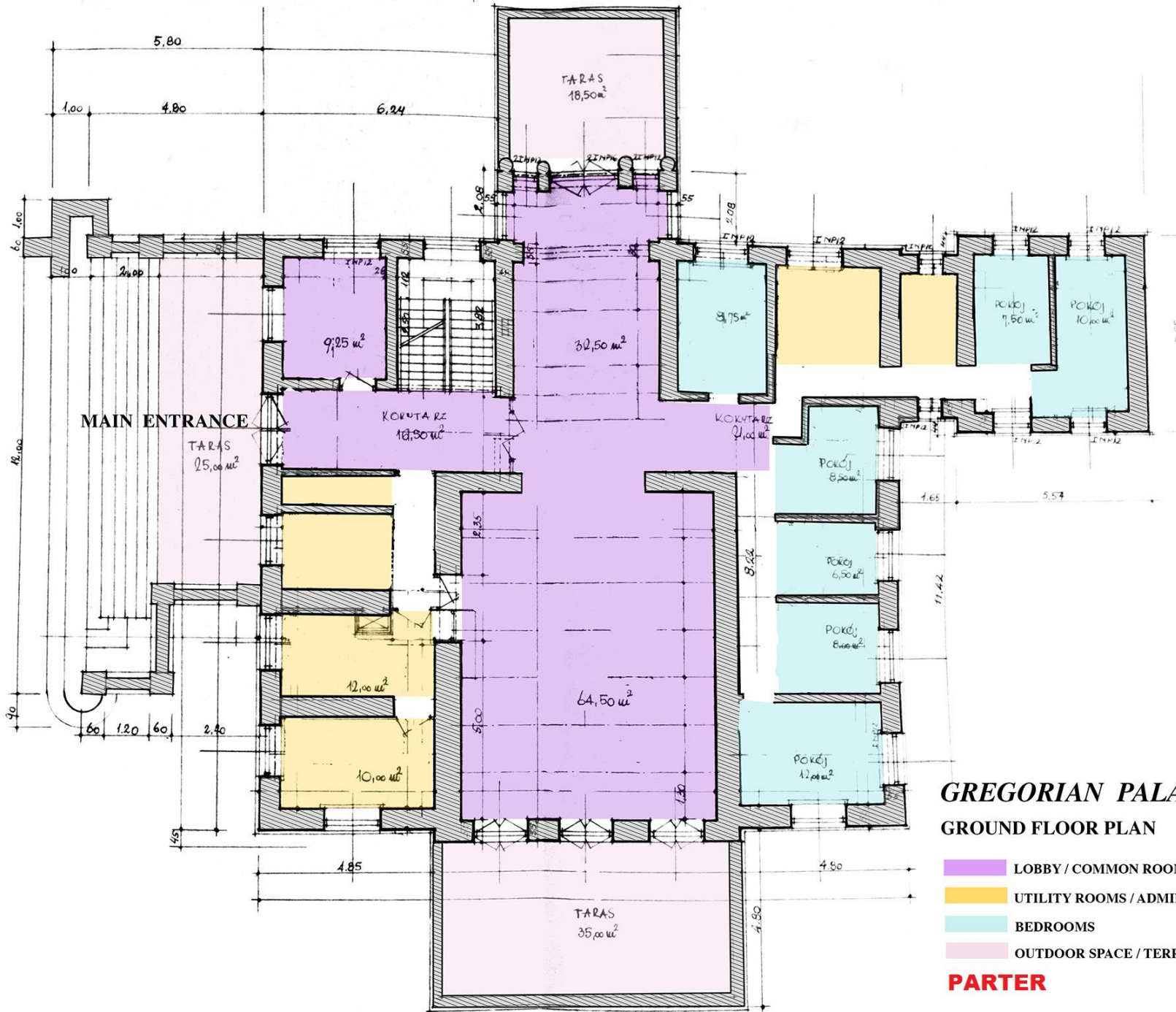


## GREGORIAN PALACE

HALF BASEMENT FLOOR PLAN

- UTILITY / ADMINISTRATION ROOMS
- KITCHEN
- BOILER ROOM

**PIWNICA**

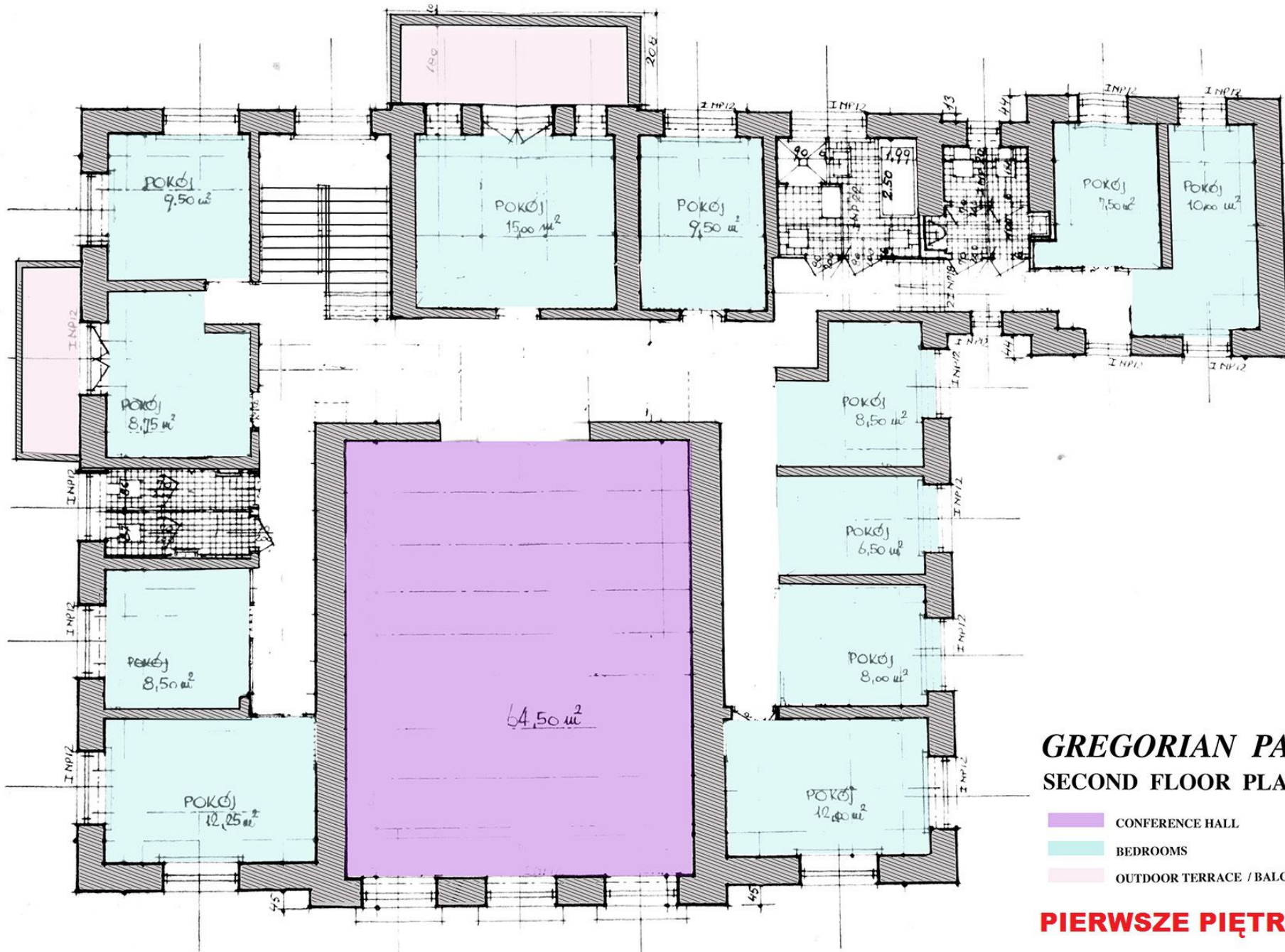


**GREGORIAN PALACE**  
**GROUND FLOOR PLAN**

- LOBBY / COMMON ROOM / RESTAURANT HALL
- UTILITY ROOMS / ADMINISTRATION
- BEDROOMS
- OUTDOOR SPACE / TERRACES

**PARTER**

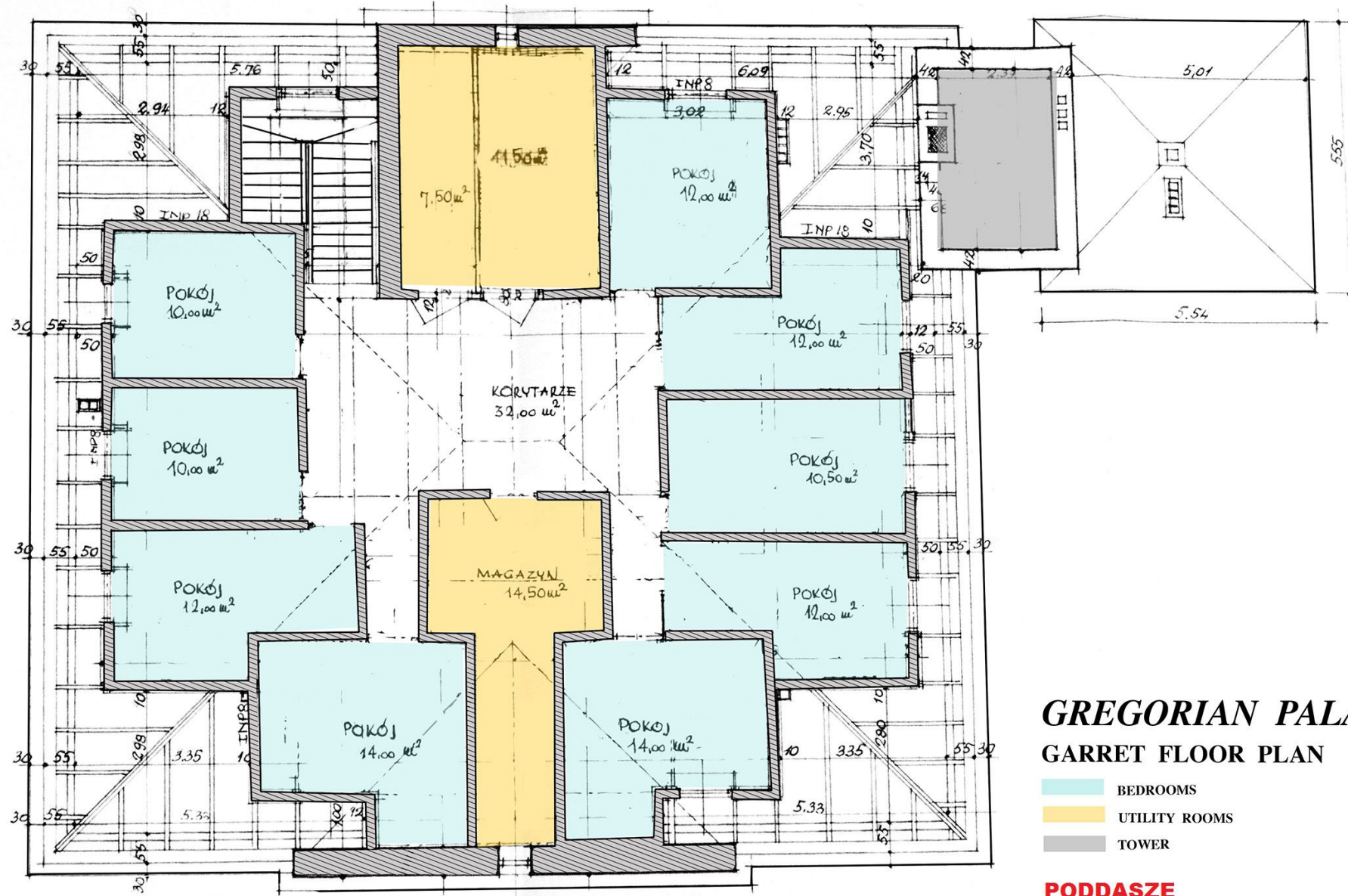




**GREGORIAN PALACE**  
**SECOND FLOOR PLAN**

- CONFERENCE HALL
- BEDROOMS
- OUTDOOR TERRACE / BALCONY

**PIERWSZE PIĘTRO**



# GREGORIAN PALACE

## GARRET FLOOR PLAN

- BEDROOMS
- UTILITY ROOMS
- TOWER

**PODDASZE**





ELEWACJA WSCHODNIA 1:100



ELEWACJA ZACHODNIA 1:100



ELEWACJA PÓLNOCNA 1:100



ELEWACJA POKUJENIOWA